

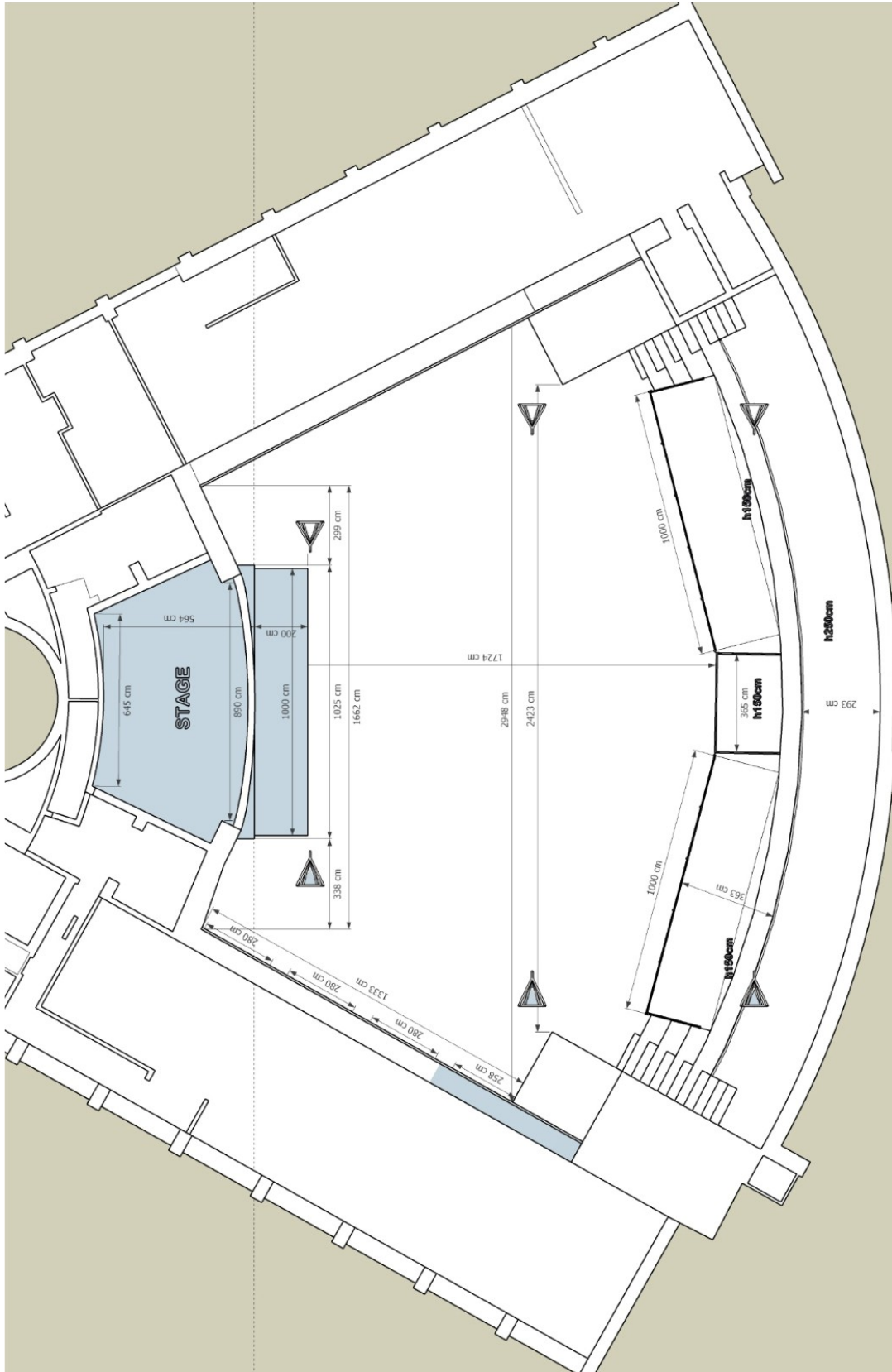
TVORNICA KULTURE



TVORNICA KULTURE

Veliki pogon

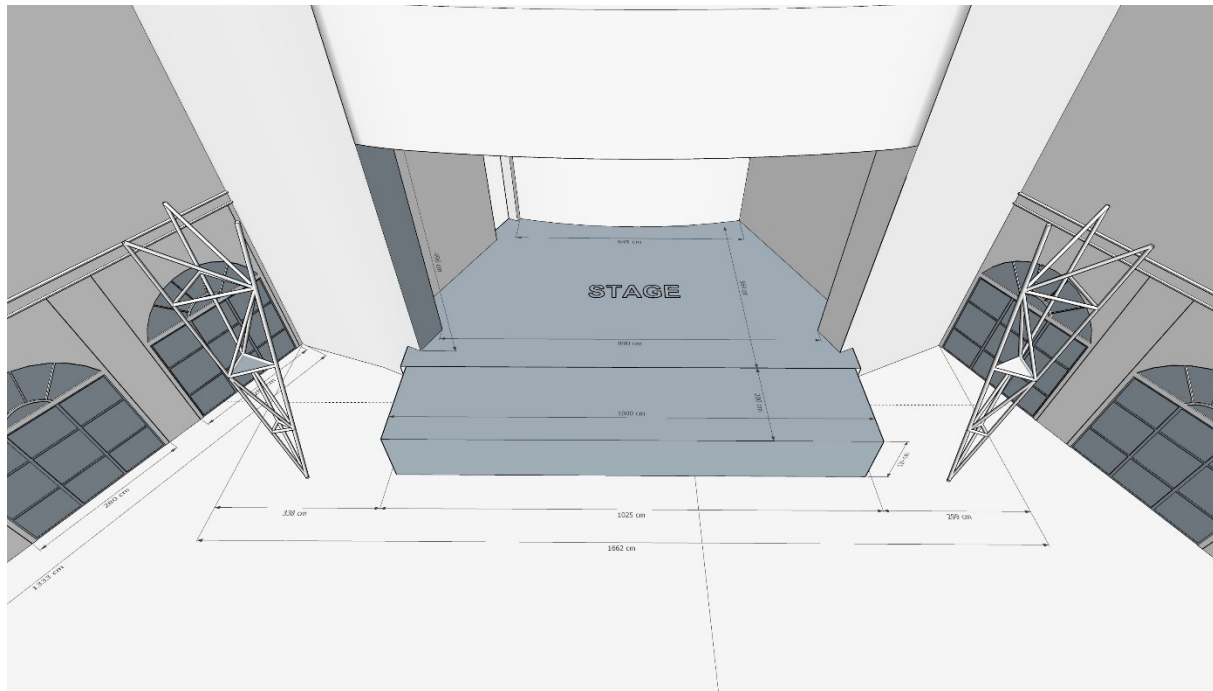
Venue Plan



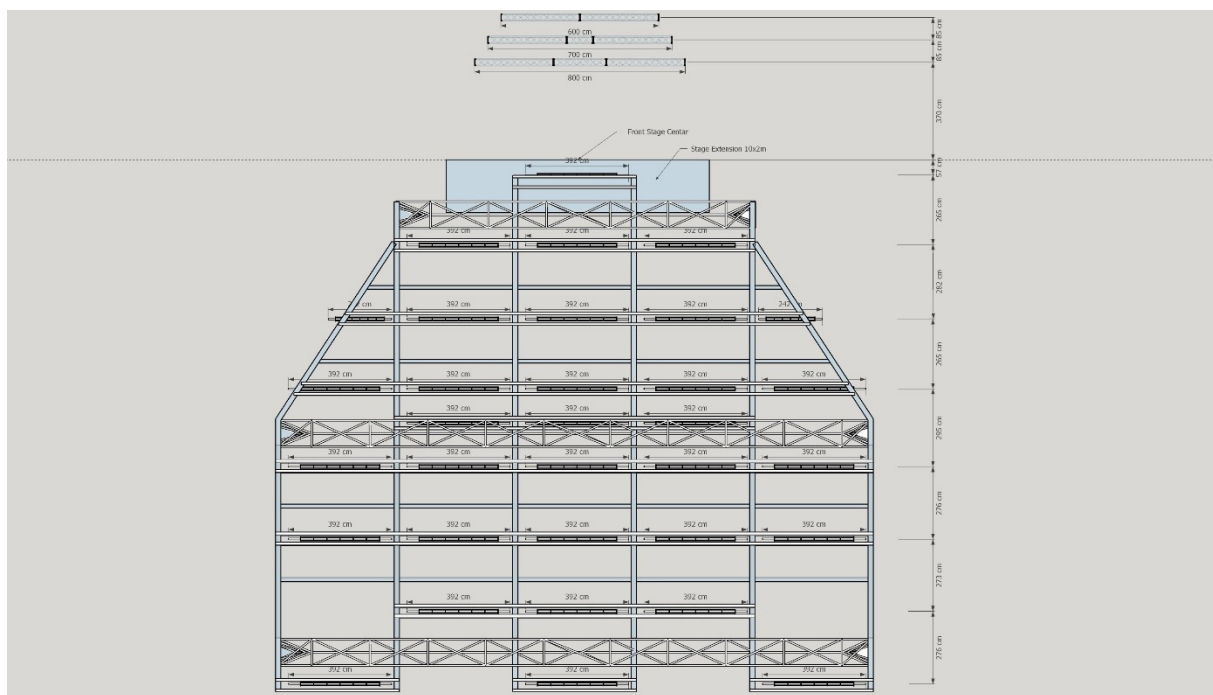
TVORNICA KULTURE

Stage + stage extension

Stage size: 8,9x5,6 meters
Stage Extension: 10x2 meters
Stage height: 1,24 meters
Clearance: 4,2 meters



Truss and venue lifts plan



TVORNICA KULTURE

PA system

Main LR

- 12 - EAW KF730 Line array system
- 08 - EAW SB1000 sub
- 01 - EAW UX8800 DSP
- 02 - LabGruppen fp1000Q
- 04 - LabGruppen fp6400

OutFill LR

- 04 - EAW KF737 Line array system
- 01 - EAW UX3600 DSP
- 01 - LabGruppen fp1000Q

CentarFill C

- 04 - EAW KF730 Line array system
- 01 - EAW UX3600 DSP
- 01 - LabGruppen fp1000Q

Delay system for gallery LCR

- 04 - EAW KF730 Line array system
- 02 - LabGruppen fp3400
- 01 - EAW MX8750 DSP

Monitors

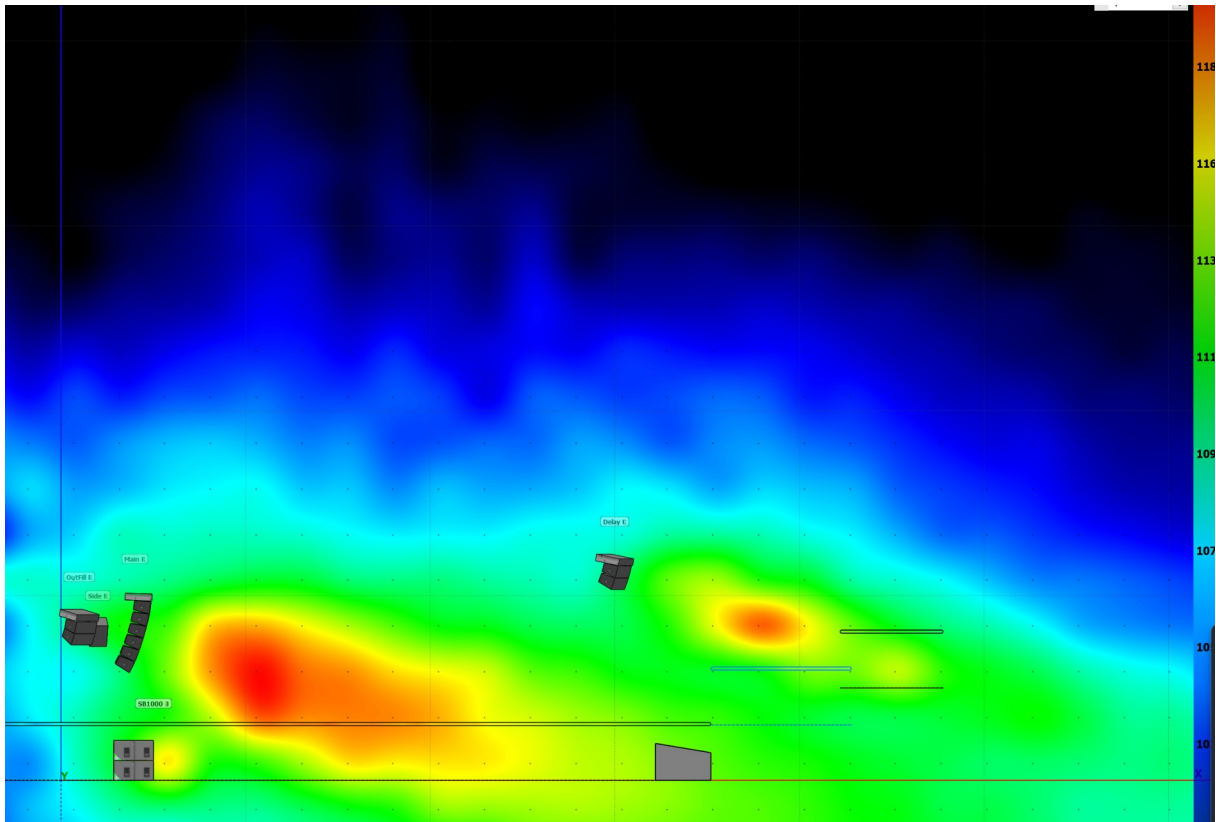
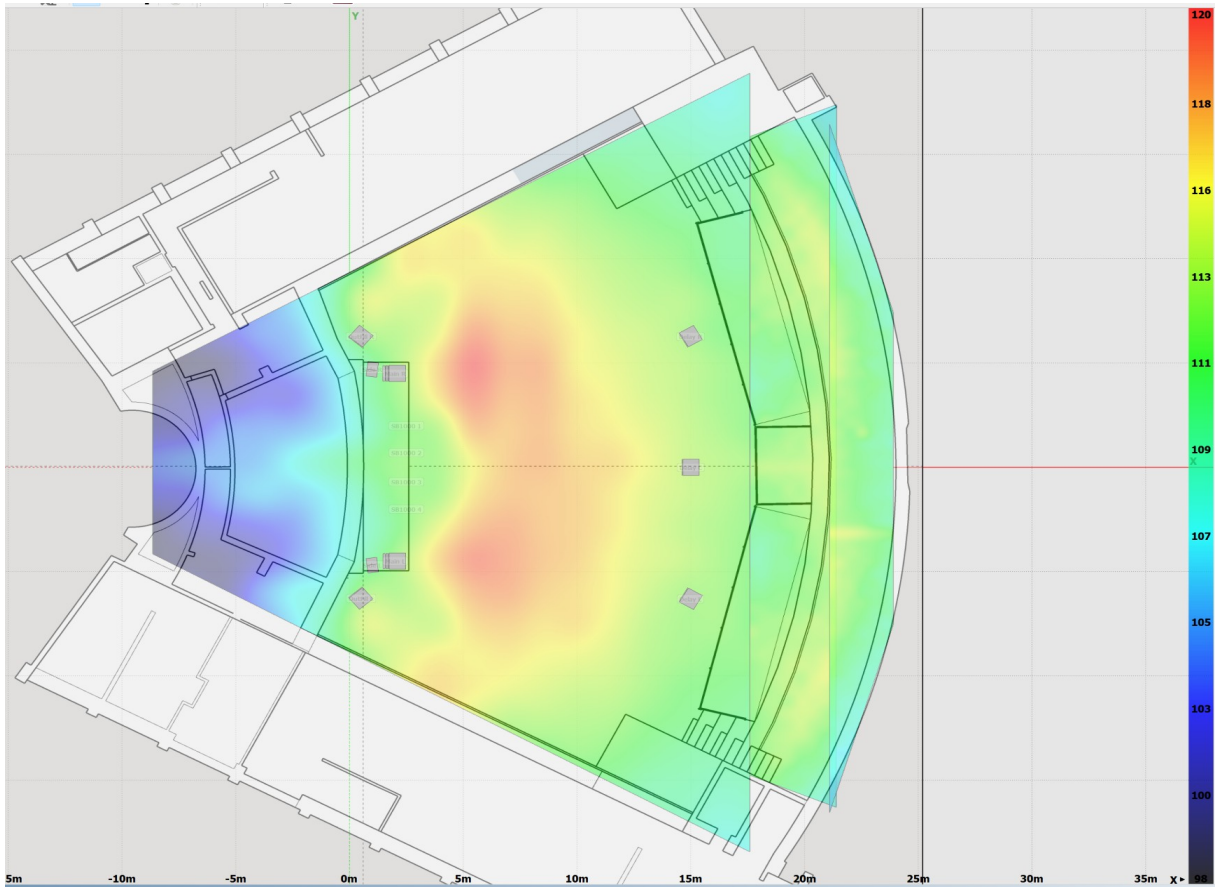
- 08 - EAW JFX260 monitor wedges
- 02 - EAW JFX560 side fills
- 02 - LabGruppen fp1000Q - side fills and monitors
- 01 - Midas M32

- 01 - FOH Yamaha M7CL

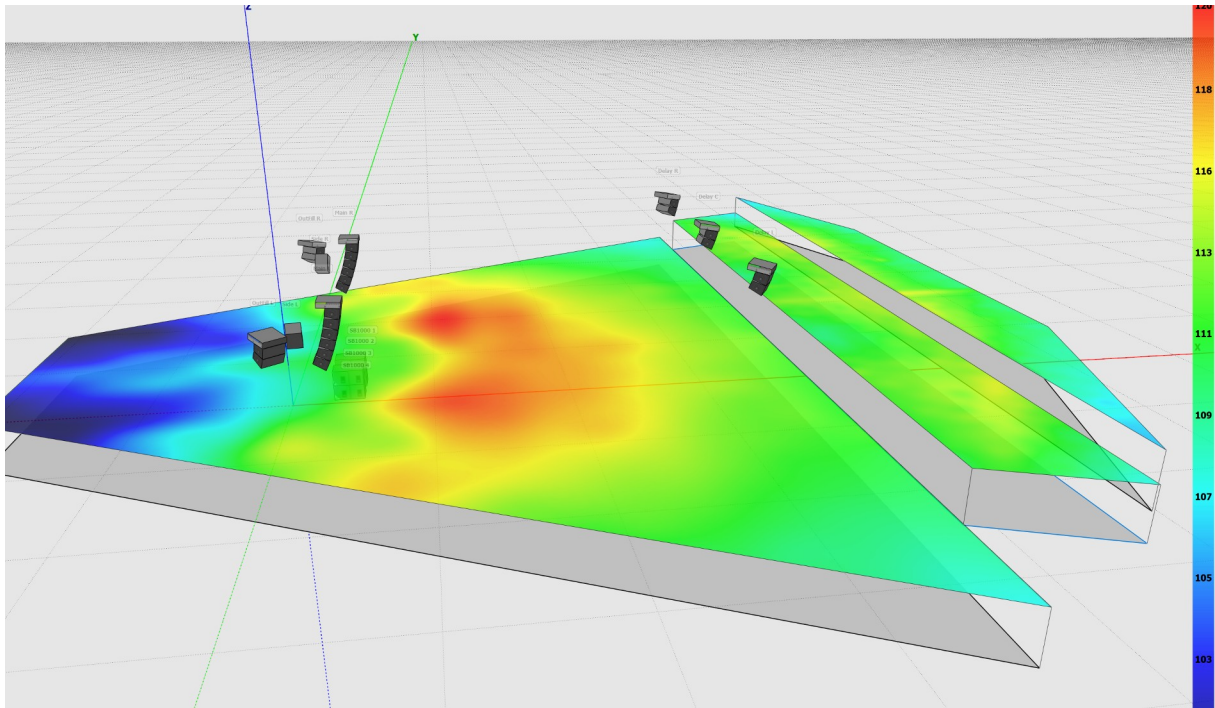
Microphones, di boxes, cables, stands, multicore

- 01 - Audix D6
- 02 - Audix D2
- 02 - Audix D4
- 01 - Audix i5
- 03 - Audix ADX51
- 02 - AKG 451
- 08 - SM58
- 05 - Beta58A
- 01 - Beta91A
- 06 - SM57
- 04 - beta56A
- 20 - K&M mic stand
- 40 - Klotz XLR 10m
- 20 - Klotz XLR 5m
- 10 - DI box BSS ar133
- 01 - Di box Klark Teknik DN200

TVORNICA KULTURE



TVORNICA KULTURE



Backline

Drums

ddrum Reflex Chrome with all necessary hardware
22x20 bass drum Remo 22" Powerstroke 3 Clear Bass
10x7 evans G2, 12x8 evans G2, 16x14 evans G2 Rack/Floor tom
14x5,5 snare
Tama SpeedCobra HP910LN bass pedal, Tama 1st chair
cymbals (hi-hat, ride, 2 x crash)

Guitar/Bas

VOX ac30
EBS Reidmar 750 Bass Amp Head
EBS ClasicLine410 (4x10")
Marshall DSL100
Marshall 1960A

TVORNICA KULTURE

Lighting system

Mooving Lights

- 08 - ClayPaky AlphaSpot 1200
- 08 - ClayPaky AlphaBeam 300
- 08 - ClayPaky B-eye K10

Effects

- 06 - Martin Atomic 3000
- 08 - Martin StageBar54
- 01 - Smoke Factory TourHazerII
- 01 - Fan

Conventional

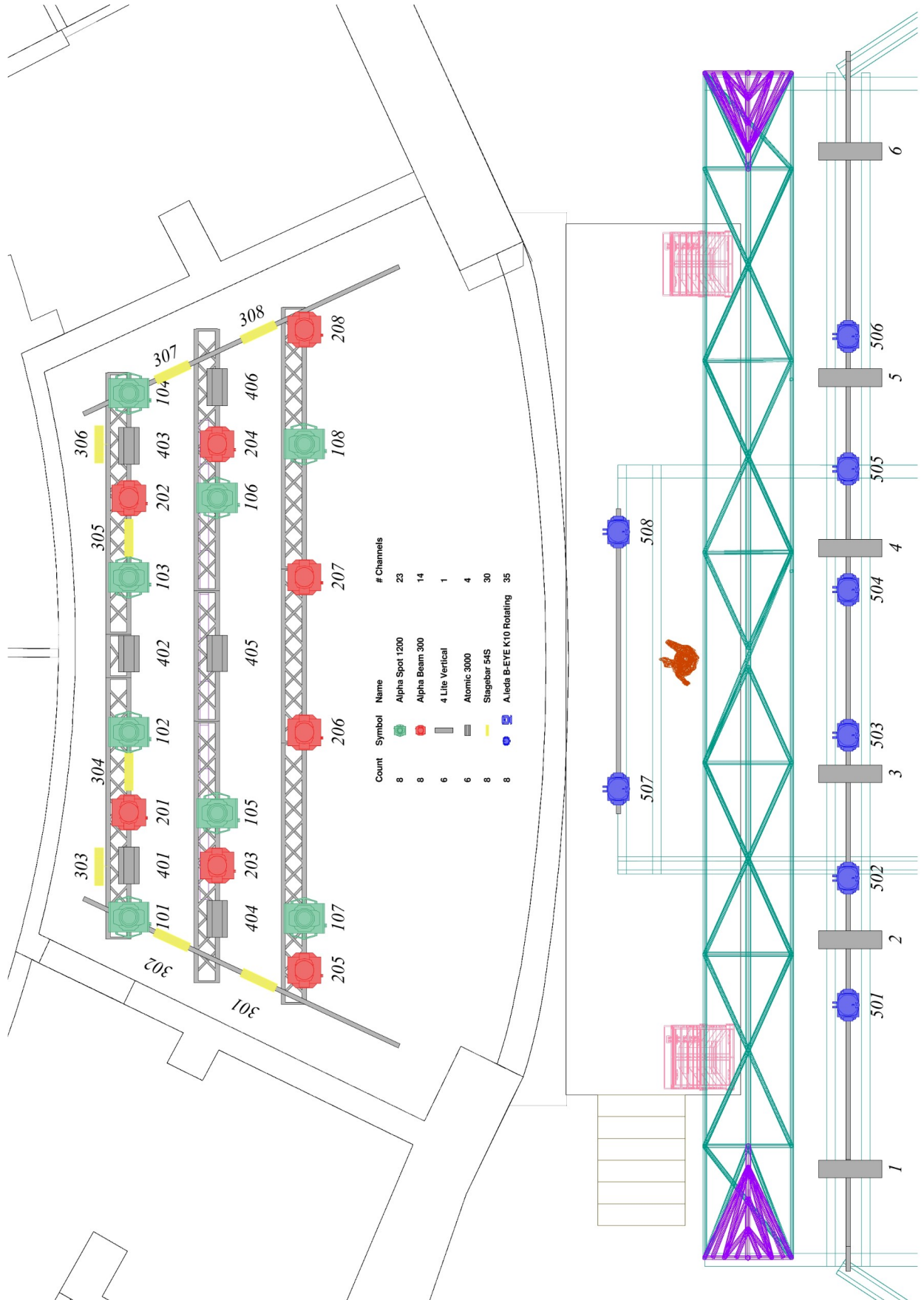
- 06 - 4lite DWE
- 01 - SGM PowerLight 1212D dimmer

Console

- 01 - GMA2 on PC + playback wing

TVORNICA KULTURE

Light Plot Top



TVORNICA KULTURE

Light Sim



TVORNICA KULTURE

Light Patch

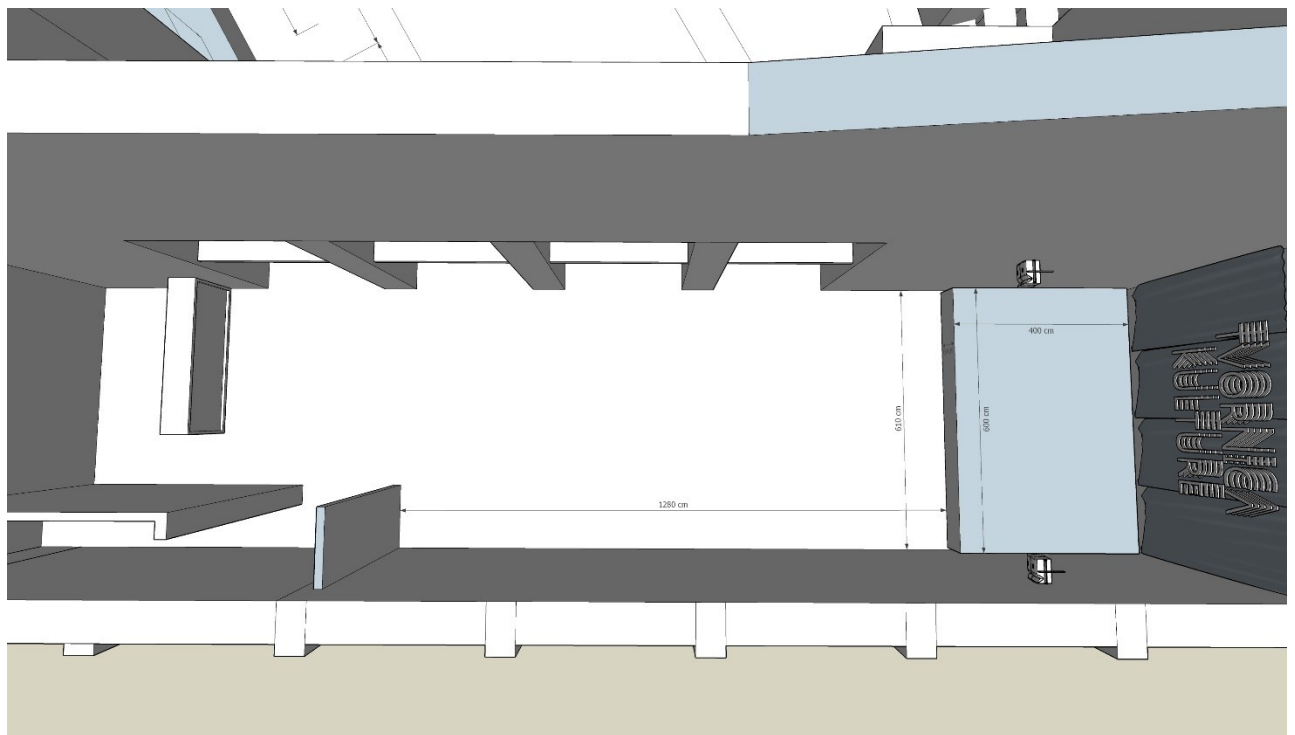
| Spot | Type | Patch | Spot | Type | Patch |
|------|--------------------------------------------------------|-------|------|--------------------------------------------------|-------|
| | DIMMERS | | | MARTIN STAGEBAR 54 RGBAW 6Pixe I 30ch | |
| 1 | 4 Lite Vertical | 1.001 | 301 | Stagebar 54S | 1.025 |
| 2 | 4 Lite Vertical | 1.002 | 302 | Stagebar 54S | 1.055 |
| 3 | 4 Lite Vertical | 1.003 | 303 | Stagebar 54S | 1.085 |
| 4 | 4 Lite Vertical | 1.004 | 304 | Stagebar 54S | 1.115 |
| 5 | 4 Lite Vertical | 1.005 | 305 | Stagebar 54S | 1.145 |
| 6 | 4 Lite Vertical | 1.006 | 306 | Stagebar 54S | 1.175 |
| | | | 307 | Stagebar 54S | 1.205 |
| | | | 308 | Stagebar 54S | 1.235 |
| | CLAY PAKY ALPHA SPOT 1200 16bit Vect OFF | | | MARTIN ATOMIC 3000 4ch | |
| 101 | Alpha Spot 1200 | 2.001 | 401 | Atomic 3000 | 2.297 |
| 102 | Alpha Spot 1200 | 2.024 | 402 | Atomic 3000 | 2.301 |
| 103 | Alpha Spot 1200 | 2.047 | 403 | Atomic 3000 | 2.305 |
| 104 | Alpha Spot 1200 | 2.070 | 404 | Atomic 3000 | 2.309 |
| 105 | Alpha Spot 1200 | 2.093 | 405 | Atomic 3000 | 2.313 |
| 106 | Alpha Spot 1200 | 2.116 | 406 | Atomic 3000 | 2.317 |
| 107 | Alpha Spot 1200 | 2.139 | | | |
| 108 | Alpha Spot 1200 | 2.162 | | | |
| | CLAY PAKY ALPHA BEAM 300 Standard | | | SMOKE FACTORY TOURHAZER II 2ch | |
| 201 | Alpha Beam 300 | 2.185 | 500 | TourHazer II | 1.500 |
| 202 | Alpha Beam 300 | 2.199 | | | |
| 203 | Alpha Beam 300 | 2.213 | | | |
| 204 | Alpha Beam 300 | 2.227 | | | |
| 205 | Alpha Beam 300 | 2.241 | | | |
| 206 | Alpha Beam 300 | 2.255 | | | |
| 207 | Alpha Beam 300 | 2.269 | | | |
| 208 | Alpha Beam 300 | 2.283 | | | |
| | CLAY PAKY A.LEDA B-EYE K10 Shapes Mode 35ch | | | | |
| 501 | A.LEDA B-EYE K10 | 3.001 | | | |
| 502 | A.LEDA B-EYE K10 | 3.036 | | | |
| 503 | A.LEDA B-EYE K10 | 3.071 | | | |
| 504 | A.LEDA B-EYE K10 | 3.106 | | | |
| 505 | A.LEDA B-EYE K10 | 3.141 | | | |
| 506 | A.LEDA B-EYE K10 | 3.176 | | | |
| 507 | A.LEDA B-EYE K10 | 3.211 | | | |
| 508 | A.LEDA B-EYE K10 | 3.246 | | | |

TVORNICA KULTURE

Mali pogon

Venue Plan

Stage size: 6x4 meters
Stage height: 0,60 meters
Clearance: 3,0m meters



PA system

- 04 - JBL VRX 928LA
- 04 - JBL VRX 918
- 02 - Crown i-T4000
- 02 - Crown i-T6000
- 01 - Midas M32
- 01 - Midas DL32
- 01 - LabGruppen fp1000Q
- 05 - EAW JFX260 monitors
- 01 - DJM900
- 02 - CDJ2000Nexus

All Backline Microphones, di boxes, cables, stands from Veliki pogon

TVORNICA KULTURE

Lighting system

Mooving Lights

- 10 - Chauvet COLORado 2-Quad Zoom
- 02 - ClayPaky Sharpy

Conventional

- 03 x Multipar 575
- 01 x 1ch dimmer
- 01 x Disco ball 30cm

Console

- 01 - Martin LightJockey